

## INSTRUCTIONS FOR AUTHORS

The *Journal of Electrical Engineering and Information Technologies* is published twice yearly. The journal publishes **original scientific papers, short communications, reviews and professional papers** from all fields of electrical engineering.

The journal also publishes (continuously or occasionally) the bibliographies of the members of the Faculty, book reviews, reports on meetings, informations of future meetings, important events and data, and various rubrics which contribute to the development of the corresponding scientific field.

**Original scientific papers** should contain hitherto unpublished results of completed original scientific research. The number of pages (including tables and figures) should not exceed 15 (28 000 characters).

**Short communications** should also contain completed but briefly presented results of original scientific research. The number of pages should not exceed 5 (10 000 characters) including tables and figures.

**Reviews** are submitted at the invitation of the Editorial Board. They should be surveys of the investigations and knowledge of several authors in a given research area. The competency of the authors should be assured by their own published results.

**Professional papers** report on useful practical results that are not original but help the results of the original scientific research to be adopted into scientific and production use. The number of pages (including tables and figures) should not exceed 10 (18 000 characters).

**Acceptance for publication in the Journal obliges the authors not to publish the same results elsewhere.**

## SUBMISSION

The article and annexes should be written on A4 paper with margins of 2.5 cm on each side with a standard font Times New Roman 11 points, and should be named with the surname of the first author and then if more and numbered. It is strongly recommended that on MS Word 2003 or MS Word 2007 and on PDF files of the manuscript be sent by e-mail:

JEEIT@feit.ukim.edu.mk.

**A letter must accompany all submissions**, clearly indicating the following: title, author(s), corresponding author's name, address and e-mail address(es), suggested category of the manuscript and a suggestion of five referees (their names, e-mail and affiliation).

Articles received by the Editorial Board are sent to two referees (one in the case of professional papers). The suggestions of the referees and Editorial Board are sent to the author(s) for further action. The corrected text should be returned to the Editorial Board as soon as possible but in not more than 30 days.

## PREPARATION OF MANUSCRIPT

The papers should be written in the shortest possible way and without unnecessary repetition.

The original scientific papers, short communications and reviews should be written in English, while the professional papers may also be submitted in Macedonian.

Only SI (Système Internationale d'Unites) quantities and units are to be used.

Double subscripts and superscripts should be avoided whenever possible. Thus it is better to write  $\nu_3(\text{PO}_4)$  than  $\nu_{3\text{PO}_4}$  or  $\exp(-E/RT)$  than  $e^{-E/RT}$ . Strokes (/) should not be used instead of parentheses.

When a large number of compounds have been analyzed, the results should be given in tabular form.

Manuscript should contain: title, author(s) full-name(s), surname(s), address(es) and e-mail of the corresponding author, short abstract, key words, introduction, experimental or theoretical back-ground, results and discussion, acknowledgment (if desired) and references.

The **title** should correspond to the contents of the manuscript. It should be brief and informative and include the majority of the key words.

Each paper should contain an **abstract** that should not exceed 150 words and **3–5 key words**. The abstract should include the purpose of the research, the most important results and conclusions.

The **title**, **abstract** and **key words** should be translated in Macedonian language. The ones written by foreign authors will be translate by the Editorial Board.

In the **introduction** only the most important previous results related to the problem in hand should be briefly reviewed and the aim and importance of the research should be stated.

The **experimental** section should be written as a separate section and should contain a description of the materials used and methods employed – in form which makes the results reproducible, but without detailed description of already known methods.

Manuscripts that are related to **theoretical studies**, instead of experimental material, should contain a sub-heading and the **theoretical background** where the necessary details for verifying the results obtained should be stated.

The **results** and **discussion** should be given in the same section. The discussion should contain an analysis of the results and the **conclusions** that can be drawn.

**Figures** (photographs, diagrams and sketches) and **mathematical formulae** should be inserted in the correct place in the manuscript, being horizontally reduced to 8 or 16 cm. The size of the symbols for the physical quantities and units as well as the size of the numbers and letters used in the reduced figures should be comparable with the size of the letters in the main text of the paper. Diagrams and structural formulae should be drawn in such a way (e.g. black Indian ink on white or tracing paper) as to permit high quality reproduction. The use of photographs should be avoided. The tables and the figures should be numbered in Arabic numerals (e.g. Table 1, Fig. 1). Tables and figures should be self-contained, i.e. should have captions making them legible without resort to the main text. The presentation of the same results in the form of tables and figures (diagrams) is not permitted.

Figures and tables must be centred in the column. Large figures and tables may span across both columns (Figure 1).

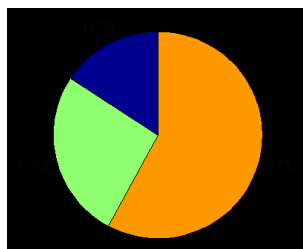


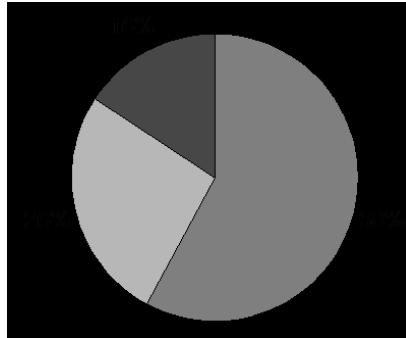
Fig. 1. Example of a graph and a single-line caption

Graphics may be full colour. Please use only colours which contrast well both on screen and on a black-and-white hardcopy because the Journal is published in black-and-white, as shown in Figure 2. The colour version is only for the electronic version of the Journal.

Please check all figures in your paper both on screen and on a black-and-white hardcopy. When you check your paper on a black-and-white hardcopy, please ensure that:

- the colours used in each figure contrast well,
- the image used in each figure is clear,
- all text labels in each figure are legible.

Please check all figures in your paper both on screen and on a black-and-white hardcopy. When you check your paper on a black-and-white hardcopy, please ensure that the image used in each figure is clear and all text labels in each figure are legible.



**Fig. 2.** Example of a graph and a single-line caption



**Fig. 3.** Example of an image as it will appear at the electronic version of the Journal and a multi-line caption

**Footnotes** are also not permitted.

The **reference** should be given in a separate section in the order in which they appear in the text. The surname of one or two authors may be given in the text, whereas in the case of more than two authors they should be quoted as, for example:

Examples of reference items of different categories shown in the References section include:

- example of a book in [1]
- example of a book in a series in [2]
- example of a journal article in [3]
- example of a conference paper in [4]
- example of a patent in [5]
- example of a website in [6]
- example of a web page in [7]
- example of a databook as a manual in [8]
- example of a datasheet in [9]
- example of a master/Ph.D. thesis in [10]
- example of a technical report in [11]
- example of a standard in [12]

All reference items must be in 9 pt font. Please use Regular and Italic styles to distinguish different fields as shown in the References section. Number the reference items consecutively in square brackets (e.g. [1]).

When referring to a reference item, please simply use the reference number, as in [2]. Do not use “Ref. [3]” or “Reference [3]” except at the beginning of a sentence, e.g. “Reference [3] shows ...”. Multiple references are each numbered with separate brackets (e.g. [2], [3], [4]–[6]).

The **category** of the paper is proposed by the author(s), but the Editorial Board reserves for itself the right, on the basis of the referees' opinion, to make the final choice.

**Proofs** are sent to the author(s) to correct printers' errors. Except for this, alterations to the text are not permitted. The proofs should be returned to the Editorial Board in 2 days.

The author(s) will receive, free of charge, 1 reprint of every paper published in the Journal.

## REFERENCES

- [1] Surname, N(ame)., Surname, N(ame).: *Name of the Book*, Publisher, Year.
- [2] Surname, N(ame)., Surname, N(ame).: *Name of the Book*, Name of the Series. Publisher, **vol.** XXX, Year.
- [3] Surname, N(ame)., Surname N(ame).: Title of the article, *Name of the Journal*, **vol.** XX, No. XX, pp. XXX–XXX (Year).
- [4] Surname, N(ame)., Surname N(ame).: Title of the article, *Proceedings of the Conference (Name)*, **vol.** XX, pp. XXX–XXX, Year.
- [5] Surname, N(ame)., Surname N(ame).: *Name of the Patent*, Institution that issued the patent & Number of the patent (Date dd. mm. yyyy).
- [6] N.N.: *The XXX web site*, web address, Year.
- [7] Surname, N.: *XXX homepage on XXX*, web address (Year)
- [8] N.N.: *Title of the Manual*, Name of the Organization, Year.
- [9] N.N.: *XXX data sheet*, Name of the Organization.
- [10] Surname, N.: *Title of the Thesis*, Master/Ph.D. thesis (in Language), Institution. Year.
- [11] Surname, N(ame)., Surname, N(ame).: *Title of the Report*, organization that issued the report, Number of the report (Year).
- [12] Institution that issued the standard, *Name of the Standard*, & Number of the standard (Year):.